



**MUKOGODO BEEKEEPER'S AND
ENVIRONMENTAL CONSERVATION
P. O. BOX 16-10401 DOL-DOL
VIA NANYUKI, KENYA, E.A.
EMAIL: mbekec@yahoo.com
TEL: 0723-994940**

MUKOGODO BEEKEEPERS AND ENVIRONMENTAL CONSERVATION

(MBEKEC)

STRATEGIC PLAN 2006 - 2012

PREPARED AND COMPILED BY:

STRATEGIC PLANNING TASK FORCE

YEAR 2005

BACKGROUND INFORMATION

Mukogodo Beekeepers and Environmental Conservation (MBEKEC) is a Community - Based Organization (CBO) that was established in order to address the perceived needs of the Maasai Pastoral Community.

The organization emerged from a concern among Maasai men and women that insufficient development initiatives were being undertaken in the pastoralist area.

The organization was therefore formed upon the realization of untapped resources and is committed to explore this through effective and quality environmental conservation for improved economic status and enhance food availability.,

MBEKEC values participation as a driving force behind the full realization of genuine development efforts and thus, respects the cultural values of the pastoral people, in order to have in-built elements of sustainability

MBEKEC is therefore, addressing poverty among the pastoralist by means of stakeholders participation in solving problems through maximizing use locally available resources as well as promote a sense of ownership of projects in the community.

VISION STATEMENT

Envisage a just, progressive and self-reliant society through working together to conserve and utilize the natural resources.

MISSION STATEMENT

To promote and facilitate the empowering the poor and marginalized pastoral community and enable to transform themselves in a sustainability manner by pooling resources, sharing knowledge and collaborating with all stakeholders.

OBJECTIVES (OVERALL)

1. To enhance the economic status and food availability through effective and quality resources utilization and management.
2. To ensure habitable sanitation and general hygiene through improvement of environmental conservation.
3. To train and facilitate community members in the acquisition of beekeeping equipment for high quality bee products.
4. To provide market for honey and other bee products.
5. Sensitize and mobilize the community on prevention of HIV and AIDS through workshops and meetings.

INTERVENTION AREAS

1. Community based Primary Health Care (CBHC) and HIV/AIDS awareness and prevention.
2. Environmental protection and conservation
3. Entrepreneurship, income generating activities
4. Livestock improvement and bee keeping
5. Water and sanitation
6. Education (formal and informal)
7. Child welfare (Lobby and advocacy particularly for girl child rights) FGM

- a) Community capacity building
- b) Gender sensitization

INTERVENTION STRATEGIES (CBHC HIV/AIDS)

The programme identified that there are inadequate health facilities within the pastoral community and mostly inaccessible due to scarcity. The mortality and morbidity rates are high due to poor sanitation, common transmitted infections and HIV/AIDS.

HIV/AIDS has left many children orphans and is a burden to the relatives. The community should be informed and learn the dangers of HIV/AIDS and contracting sexually transmitted diseases. Poor hygiene practices, lack of pit latrines, compost pits and lack of clean drinking water are the causes of high prevalence of diseases. The morbidity (Specially with women) as a result of risky cultural practices such as FGM is prevalent due to excessive bleeding and birth complications.

Risky sexual behaviors and the use of one knife for circumcision are cause of HIV/AIDS transmission.

Poor risk perception, myths, harmful cultural practices such as forced marriages and female genital mutilation, marginalization of women's socio - economic status, stereotype negative reinforcement are contributing towards HIV/AIDS spread.

Husband/Wife having several sexual partners place the other/each partner in a subordinate role making him/her more vulnerable to HIV/AIDS.

The programme will take care of the communities health needs in the form of training on PHC practices.

OBJECTIVE

To reduce mortality and morbidity rate by creating awareness and promote optimum community participation on PHC and sanitation practices and thus increase life expectancy.

MAIN ACTIVITIES

1. Create awareness on PHC practices through seminars, meetings and video shows within the area of operation.
2. Sensitize and mobilize the Community Health Workers (CHWs) and Traditional Birth Attendants (TBAs) and Village Based Counselors (VBC).
3. Assist families / households improve their housing standards from the present condition to corrugated iron sheets roofs for rainwater harvesting.
4. Establish growth monitoring and nutrition demonstration centers within the programme area.

EXPECTED OUTPUT / OUTCOME

- Balanced diet habits practiced.
- Improved personal and environmental hygiene.
- Improved feeding among expectant mothers
- Reduced incidences of diseases prevalence
- Improved awareness of PHC practices
- Increased immunization coverage.
- Reduced traditional beliefs and harmful practices

- Reduced rate of abortion, STIs and HIV/AIDS contraction

ENVIRONMENTAL PROTECTION AND CONSERVATION

The environmental is the threat of degradation of overgrazing, destruction of trees, which have contributed, to adverse soil erosion effects in most parts of the division.

The programme will create awareness to the community on the need to conserve and care for the environment. Resource management communities identified by the community taking into consideration gender sensitivity will be trained to take charge of existing natural resources. MBEKEC will enhance and maintain community capacity for conservation through awareness creation, resource identification, utilization and management.

The programme will prepare conservation intervention involving the development of a community based management plan of the environment through integration of modern and traditional management methods by the local people who directly depend on it, so that they can benefit from it sustainably.

MBEKEC together with the community and other collaboration will collectively establish and agree on the best way to manage the environment, so as to maintain its bio- diversity and ecological values as well as provide for socio - economic needs of the community.

MAIN ACTIVITIES

1. Strengthen community members know how to manage land for healthy livestock and a sustainable environment.
2. Conduct environmental and land management trainings
3. Enhance community based natural resource management through community involvement in identifying the locally available resources for utilization.
4. Control land degradation by engaging the community in conservation activities such as grass reseeding, tree planting, gulley control for both the natural vegetation.
5. Establish Village - Based Tree Nurseries for both indigenous and exotic seedlings.

OBJECTIVE

To minimize environmental degradation through effective community based natural resource management and rehabilitation interventions.

EXPECTED OUTPUT / OUTCOME

- Reduced destruction of trees
- Reduced soil erosion effects
- Trained Natural Resource Management Committees
- Enhanced environmental sound hygiene practices
- Improved protection of natural forests
- Enhanced tree planting and grass reseeding methods
- Improved community sense of ownership
- Changed and reliable seasonal pattern
- Improved grazing methods (pasture management)
- Improved habitation / settlement
- Improved and rehabilitated rangeland
- Conducive living sanitation
- Improved beekeeping and quality honey harvesting.

WILDLIFE AND BIODIVERSITY CONSERVATION

Wildlife and Biodiversity conservation is a project to boost the already existing community initiatives to project / conserve both flora and fauna. This project will help strengthen the effort put in place by the organization / community and create synergy among the various initiatives.

The project will involve establishment of an eco-lodge and a cultural center in promotion of bead and embroidery work. The land is currently playing host to many wild animals and game birds.

MBEKEC will enhance wild like and biodiversity conservation through development of income generating enter project and capacity building of the local community to sustainably manage continued conservation and emanating enterprise for the budget of the entire community.

ECO-LODGE

The lodge shall be built using entirely low impact local materials. This lodge shall have seven double bedrooms with flush toilets and basin with hot & cold water running, kitchen, stoves, bird's bunkhouse, which has three bunk beds and shower room, 20 single beds and cottages and swimming pool.

There shall be plentiful of activities and an amazing amount of exploring can be done. The forest within the conservation area is full of butterflies, birds and plants local natural experts on the local fauna and flora, will be able to introduce people to the medicinal properties fthe plants and the bird life is also plentiful and the Maasai guides house keen eyes and a real knowledge of them. The lodge will be established and maintained to make sure that tourist/visitors find it comfortable and memorable. Guests will enjoy a memorable experience in actual traditional setting where guests will enjoy the Maasai culture - social and economic life, family rites of passage and material culture.

INCOME GENERATING ACTIVITIES

The community being pastoralists, has only focused and emphasized on livestock keeping which is the only source of generating income and food security. The lifestyle place them on a risky economic platform as in the event of prolonged drought, disease outbreak an other calamities, the community is left without an alternative source of income to meet the basic needs.

The community will be mobilized to establish federal working groups/community associations in order to generate welfare self-reliance, increase household income and food availability.

OBJECTIVE

To enhance the standard of living of the pastoral community by reducing poverty levels and raise household income.

MAIN ACTIVITIES

1. Encourage formation of small scale enterprise groups
2. Conduct leadership training groups on business
3. Identify and support viable enterprise through establishment of a loan scheme
4. Assist people to improve their economic status by starting small - scale enterprises.
5. Encourage and improve bee keeping, livestock marketing, hides and skins business and beaded artifact production.

6. Improve the economic status of the general pastoral community through micro-enterprise support scheme.
7. Encourage establishment of honey co-operatives.
8. Assist farmers to acquire improved beehives to promote quality practices.

EXPECTED OUTPUT/OUTCOME

- Trained and established small scale enterprises
- Increased small scale and micro enterprises
- Increased income base
- Market sources identified / established
- Established self help groups
- Enhanced business skills
- Reduced poverty level
- Income generating diversification practiced (enhanced)
- Reduced traditional practices and values that encourage laziness
- Increased marketing and purchasing power of goods / services.
- Raised income per household.

LIVESTOCK PRODUCTION

The community depends on livestock for milk, meat and for sale in order to generate income. The community experiences some challenges on livestock keeping as a result of severe drought lack of water, animal disease causing loss of animals. The community strongly believes in livestock keeping only and lacks marketing skills in livestock business. The programme will motivate and encourage the pastoral community to diversify their means of production as a means of engaging in enterprise development activities.

OBJECTIVE

To enhance sustained food sources for the target community through diversification of activities for optimum production.

MAIN ACTIVITIES

- Assist the pastoral community improve the bargaining power when selling their livestock through establishment of cooperative.
- Sensitize the community on drought /disaster preparedness and mitigation
- Train farmers on quality honey production and marketing.
- Hold community trainings and exposure on animal breeding and range management.
- Establish restocking programme for extremely poor community members to acquire livestock.
- Train community on better and organized land use methods.
- Sensitize the community to identify the neediest of the needy persons within the area of operation.
- Improve bee keeping techniques and honey production by establishing demonstration apiaries.
- Assist pastoralists improve their livestock breeds, production and management potentials.
- Identify and train contact farmers for enhancement.

EXPECTED OUTPUT/OUTCOME.

- ❖ Increased crop / livestock production
- ❖ Improved nutritional status
- ❖ Improved food availability
- ❖ Improved marketing skills
- ❖ Improved health conditions and productivity
- ❖ Strengthened marketing systems
- ❖ Reduced poverty levels
- ❖ Reduced dependency / relief handouts
- ❖ Enhanced and increased development activities.

WATER AND SANITATION

Water is the most important resource, which is a major problem in the area. The absence and poor accessibility of water sources has resulted in poor personal and household hygiene practices. Water related diseases are prevalent due to poor protection and management of few scarce water points.

Lack of ownership by the community of existing dams, bore holes, rock catchment and wells as well as they claim they were not involved in the design and implementation.

OBJECTIVE

To ensure availability of clean water in the shortage walking distance within the programme area

MAIN ACTIVITIES

1. Construct sub - surface dams within the programme area
2. Identify and train community members on maintenance and operation of water pumps/hand pumps, sub-surface dams and rock catchments
3. Establish and train village based communities on resource utilization and management.
4. Establish a water user fee system for each water pump to cater for maintenance, repair and administration purposes.
5. Encourage roof water harvesting by assisting 30 household construct water tanks - (ferrocement) within the three zones.
6. Construct rock catchments within the programme area.
7. Facilitate awareness creation meetings on appropriate water harvesting techniques.

EXPECTED OUTPUT/OUTCOME

- Increased number of water points
- Improved personal hygiene
- Reduced incidences of water borne diseases
- Improved rainwater harvesting
- Hygiene practice enhanced
- Improved management of existing water points
- Increased social - economic activities.

EDUCATION

The enrollment of girl child in school is almost equal to that of boys and girl child education is considered to have transient status in the society since it is not taken to be of importance or priority.

Child labour is prevalent within the community resulting in children dropping out of school to provide cheap labour and poor families lending their children for labour to rich families in exchange for meager wages and animals.

The pastoral community still lags behind in education as they so dearly hold to their cultural practices such as early marriage, female genital mutilation, pastoralism lifestyle, which involves moving with the livestock in search of water and pasture. This has greatly affected the attainment of education for the Children especially the girl child.

The literacy levels are low for both men and women within the community. MBEKEC will establish and improve initiatives that emphasize on adult education through holistic participatory approaches to empower communities and ensure the learning is relevant to the needs of the learners.

The community will be sensitized that, even with their rich culture, children still need to attend and complete school education. Lack of awareness on the importance of education, preference of livestock to education and traditional beliefs and practices leads to low enrolments and attendance in school, poor performance, low literacy levels and poor standards of living conditions in the community.

OBJECTIVE

To enhance quality standards of education which will lead to education of illiteracy and improve the lives of the target community.

MAIN ACTIVITIES

1. Organize for exposure educational tours for community members in order to share experiences and information.
2. Establish a bursary scheme for needy pupils and students.
3. Hold consultative meetings to sensitize and mobilize the community on the importance of education.
4. Establish and improve on adult literacy level among the majority member of the community within the programme area.
5. Assist primary schools and pre-schools within the programme area acquire learning / teaching materials.

EXPECTED OUTPUT/OUTCOME

Increased school enrollment level.

Increased percentage of girl child in enrolled schools

Raised awareness on the importance of education among parents.

Reduced girl child education rights violation.

Reduced traditional beliefs and harmful practices.

Reduced dependency syndrome.

Raised literacy level within the community.

Improved standards of living within the community

Improved performance in national examinations

- Reduced school drop out rates.
- Increased community capacity in leadership and decision making.
- Increased participation / involvement of the community in implementation of projects
- Increased number of adult literacy classes
- Positive attitude of the community members towards education.

GIRL CHILD WELFARE - FGM

Female Genital Mutilation continues to be a major problem affecting the health and hindering the education of the girl child among the pastoralist community. Since this harmful cultural practice is seriously affecting school enrollment among teenage girl child, local chiefs, women leaders and opinion leaders be involved in helping curb the practice.

HIV/AIDS scourge. Frequent awareness seminars for both men and women in the area will be conducted and people will slowly discard the practice.

The community be take on organized tour where they will be able to learn about alternative rites of passage and learn more strategies that would lead to the eradication of female genital mutilation (FGM).

OBJECTIVE

To engage in advocacy alternative for the protection of rights of the girl child and improve the conditions necessary for enhancing their potentials in general (particularly the girl child) towards a healthy meaningful life.

MAIN ACTIVITIES

1. Sensitize and mobilize the community on the plight of girl child.
2. Improve guidance and counseling both in schools and a home through youth clubs and fellowships.
3. Establish a Girl Child Education and Empowerment Centre
4. Sensitize and mobilize the community on the importance of girl child education
5. Create awareness on the effects of FGM and HIV/AIDS prevalence / contraction
6. Mobilize the community to discourage cultural practices such as forced/Early marriages, moralism and child labour.

EXPECTED RESULTS

- Reduced incidences of child rights violation / abuse
- Improved guidance and counseling programmes
- Improved child nutritional status
- Reduced FGM/EM practices / incidences
- Reduced harmful traditional practices and values
- Reduced mortality rates
- Improved equal rights for both and girls .
- Enhanced moral standards
- Positive attitude of the community members towards girl child.
- Uninterrupted learning for the needy children
- Reduced school drop outs rates
- Changed attitude and values for girl child.
- Reduced incidences of child labour and street children

GENDER ISSUES

OBJECTIVE

To engage in interventions that enhance on basic rights of the marginalized groups / persons particularly women within the operation area through gender sensitization and awareness creation.

MAIN ACTIVITIES

1. Encourage the formation of women groups
2. Sensitize and mobilize the community on involvement in decision-making and to actively participate in all development activities.
3. Conduct leadership training for women discrimination through seminars, workshops, couples meetings and during weddings ceremonies.
4. Mobilize and sensitize men to accept and treat women of equal value in the Society-
5. Mobilize the entire target community, change their attitude on gender disparity.

EXPECTED RESULTS

- Increased number of women in decision making
- Positive attitude towards women participation in development
- Increased number of girls enrolled and completing schools.
- Increased number of women acquiring professional skills
- Strengthen family institutions
- Reduced domestic violence incidences
- Reduced divorce and separation cases
- Improved capacity and leadership skills among women
- Equity in resource allocation, ownership and responsibility.
- Reduced discrimination, sexual abuse and harassment against women.

CAPACITY BUILDING

OBJECTIVE

To equip the community with relevant skills and knowledge on leadership and community development training through opportunities.

MAIN ACTIVITIES

1. Involve community committees as equal partners in all major decisions in the project.
2. Conduct leadership trainings for project comities, self-help groups and church leaders,
3. Organize for exposure tours
4. Develop a training curriculum for leaders; project steering community resource persons and other community-organized groups for knowledge and skills on sustainable development.

EXPECTED RESULTS

- Enhanced active community participation and involvement
- Raised awareness / exposure

- Improved management / leadership practices
- Positive change of attitude, knowledge and behavior
- Enhanced ownership of development projects
- Enhanced understanding and mutual confidence / trust
- Reduced syndrome and oppression / dominance
- Improved self- reliance and commitment
- Enhanced accountability and transparency
- Improved sharing of responsibility and obligations
- Enhanced information sharing and creation of awareness

PROGRAMME CAPACITY GROWTH

MBECEK will establish a process of measurement to facilitate correct and balanced judgment about the ability of community to implement its own vision in it various programme capacity growth stages of development i.e planting, germination, growth, flowering and propagation stages. The capacities to be measured include management, finance, technical skills, networking and spiritual welfare and other different types of capacities as determined by the community.

MBEKEC will assist the community to know where they are in their journey to development and therefore help them know what should be next action step to be taken. The programme will also achieve its goal of sustainable community based development. However, **MBEKEC** will plan/develop community capacity for eventual ownership of the process.

From organization development point of view, **MBEKEC** will strive to become a more effective Community Based Organization or change agent by focusing on improving understanding of community based sustainable development.

The organization will implement activities and objections that build the local community, Institution and household capacity for sustainable livelihood.

STANDARDS / INDICATORS FOR PROGRESS / GROWTH

1. There is a functional community group / committee taking responsibility for facilitating development and sustaining participation of people.
2. Community shows sustained and involvement together with committees in development process.
3. Community has established functional service point and learning centers (community resource center) to foster future development efforts.
4. Community has evolved into Functional Working Groups (FWG) and has developed an appropriate type of institutional framework association or Education that supports its long-term development Plans-
- 5, There is an established network for resource generation and collaboration with existing government and non-governmental agencies partners n development
6. Community has developed sustainable mechanism that promotes self-supporting development efforts of individuals, families and groups in the community.
7. Community ownership of the development process
8. Involvement of women / children in decision-making and air treatment of both sexes.
9. Self-propelling community (ability to start other development projects).

MBEKEC APPROACHES / STRATEGY

The techniques, tools and methods of work we choose will be consisted with our values and principles.

- MBEKEC will adopt /emphasize on participatory methodology will liase with relevant Government department to implement its project.
- MBEKEC will liase with relevant Government department to implement its project.
- The organization will enhance financial sustainability by establishing income-generating projects.
- Transparency and accountability will be enhanced between partners and donors.
- The organization will continue sourcing for external support in areas where capacity is lacking
- Training staff in collaboration with other institutions providing such relevant courses.
- Equip the office with computers and communication facilities.
- Vision, Mission and objectives clarity are shared among the community and membership.
- Train the management committees' members their roles and responsibilities.
- Organize exposure tours to enhance leaning from others.
- Establish documentation and information dissemination using audio visual equipment (Video player. Video Camera, TV & Accessories).
- Competitive /Suitable consultants will be approached to provide consultancy work in specific activities.

PROGRAMME STAFF

The programme will have me following staff

- 1 Manager
- 1 Accountant
- 1 Driver
- 3 Co-ordinators
- 1 Guard
- 1 care taker
- 6 Community Development Promoters

Volunteers will be selected from /by the beneficiary community

PROGRAMME STAFF FACILITATION

The programme will be facilitated with

- 1MWD Toyota land Cruiser Pick up
- 4 Motor bikes
- 6 Bicycles
- 3 desk top computers
- 1 lap top computer

- 1 Printer
- 1 Telephone or Radio call set
- Lighting - generator
 - Solar System + Battery
- 1 Photocopier
- 12 Furniture (sets)

TECHNICAL SUPPORT

The organization (MBEKEC) will promote sector-based best practices by hiring and deploying competent staff to champion each sector. This will enhance the programme in implementing technically sound initiatives.

Technical expertise will be sort from competent external consultants for special assignments, which include evaluation, surveys, Audit and Joining.

BUDGET

- Financial expenditure should take into account community pace in order to minimize carry-overs v/s programme progress.
- Enhance education on community based development in consideration to community pace and readiness (discourage handouts)
- MBEKEC should exercise patience and be absorber of pressure from supporters / donors.

COMMUNITY CAPACITY (EMPOWERMENT)

- Annual activity calendar to be made at the beginning of the year in a participatory way, preferably during internal review meetings.
- Planning to be done with community and provide room for urgent issues emerging from the community, programme office and supporters partners.
- Consider on the appropriate times of certain activities to avoid overlap.
- Facilitate the community to understand the use of gender activities analysis and understanding of women and men in time management (imbalance of workload between women and men).
- Facilitate the community improve networking capacities.
- Enhance adequate community mobilization and sensitization for active participation and ownership.

COLLABORATION AND NETWORKING

MBEKEC will establish partnership with clearly defined mutual obligations and share responsibility through planning, implementation, reporting and reviewing towards achieving a common shared goal.

- (a) MBEKEC will have written MOU with the community groups and other stakeholders.
- (b) MBEKEC will facilitate the community in the development process within the community will identify its key projects, sectors, define and target the beneficiaries and elect committees to lead in the implementation in order to actualize its goals.
- (c) MBEKEC Board, staff and committees shall promote good relations with the Government and other stakeholders at all levels.
- (d) MBEKEC will enhance its links with key donors through regular reporting and exchange visits.

(e) A database of key learning and replicable best practices will be maintained and shared with all stakeholders.

PROGRAMME SUSTAINABILITY AND SCALING UP.

Programme sustainability will be achieved by ensuring that the communities are involved in management decisions and eventual ownership of the development process. Effective participation, involvement, coordination and allocation of responsibility by the beneficiary community will be the basis of capacity building on management and decision making of the organization.

FUNDRAISING

Grants will be sourced from well wishers, friends, (private donors) and bilateral funding agencies. Grants will be considered and planned for as complementary to meet the needs of the community.

Community contribution will be an important factor in the programme sustainability. The contribution will be both in kind and cash, contributions in kind will be monitored and appropriately valued and documented using the local context rates. Joint programme planning and implementation with key stakeholders is one of the key MBEKEC principles in order to avoid duplication and encourage the spirit of complementation.

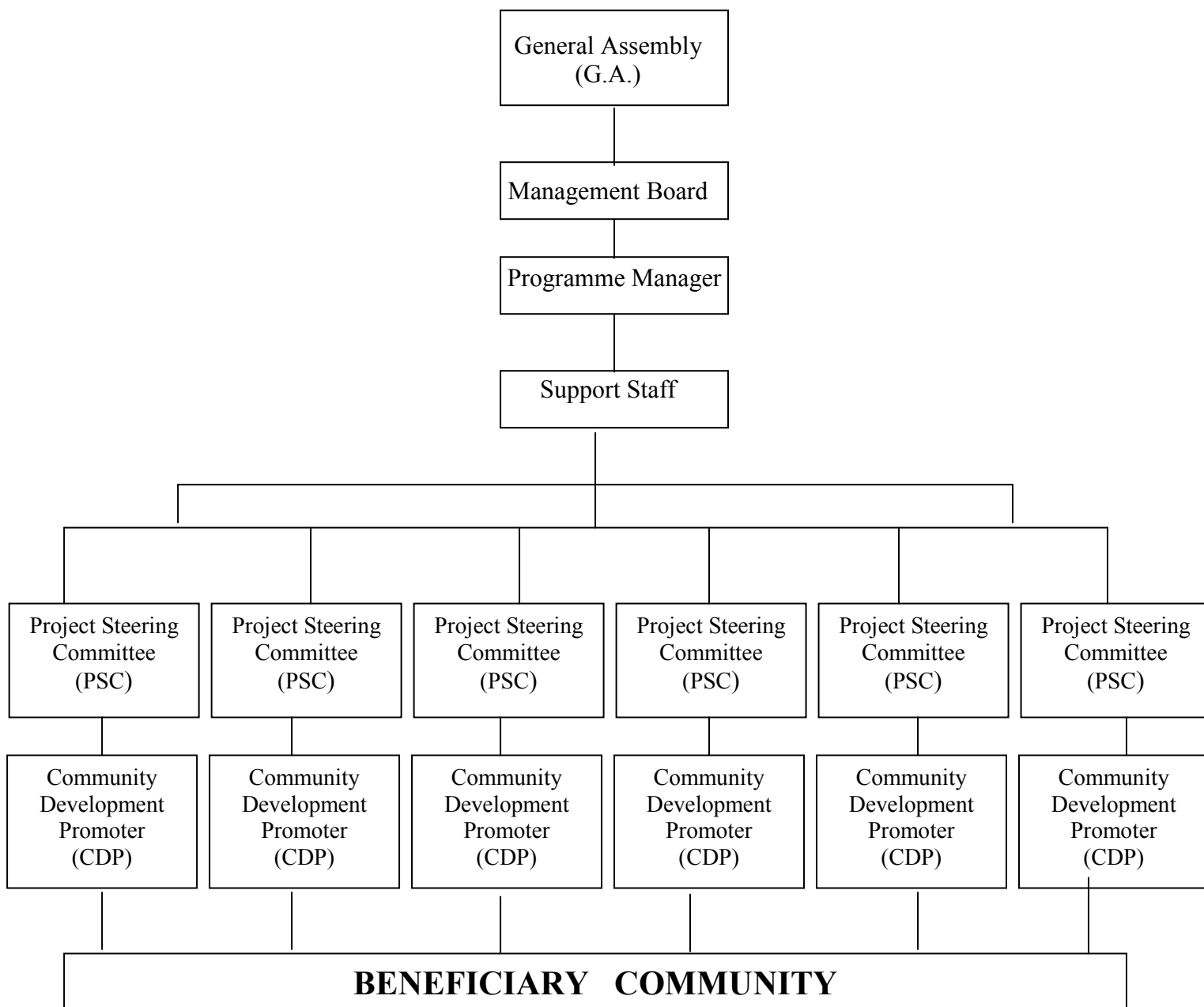
MECHANISM FOR MONITORING AND EVALUATION

Participatory Monitoring and Evaluation (PME) approaches will be used incorporating quantitative and qualitative achieving indicators.

The Management Project Steering committees. Community Resource Persons and the Programme Staff will be Jointly involved in planning implementations, evaluation and monitoring of the development projects.

Frequent Management Board. Project Steering Committees, Programme Staff meetings and regular contacts with project community groups will enhance effective and efficient monitoring and evaluation process.

MBEKEC ORGANIZATION STRUCTURE



ACTIVITY SCHEDULE AND COST

ACTIVITY	COST	YRI	YR II	YR	YR IV	YR V	YR VI
Enhance PHC best practices & HIV /Aids	10,000,000	X	X	X	X	X	X
Promote viable, quality Income Generating Activities	6,000,000	X	X	X	X	X	X
Upgrading of quality Livestock breeds	5,000,000		X		X		X
Enhance quality performance hence standards of education amongst the pastoral community	3,600,000	X	X	X	X	X	X
Advocate for women Girl Child rights and discourage Traditional harmful practices e.gFGM	1,800,000	X	X	X	X	X	X
Establish and promote roof water catchments among the beneficiary community	5,000,000			X		X	
Range Land rehabilitation through tree planting, grass reseeding and gulley control measures.	3,000,000	X		X		X	
Establishment of a cultural Resource Centre for cultural artifacts dips lay	10,000,00		X	X	X	X	
Safeguarding Wildlife and quality of biodiversity integrity the conservation	1,800,000	X	X	X	X	X	X
Training of Game scouts / Guides	900,000	X	X		X		
Improvement of quality cultural products and marketing	1,200,000		X	X	X	X	
Improve quality of honey production, harvesting, storage and market through training & acquisition of modern beehives and equipments	1,200,000	X	X		X	X	
Communication cost	600,000						
Machines Fuel /Maintenance	3,796,000						
Contingencies	3,550,000						
Sub Total	57,446,000						
GRAND TOTAL	114.021.000						

ACKNOWLEDGMENT

We acknowledge the effort made by the management and the entire membership of MBEKEC (CBO) in support for the formulation of this document through financial and moral support.

We also appreciate and acknowledge the following (planning task force) for their endeavor to see this strategic document complete,

1. Pastor Samuel Ndungu - *Chairman*

2. Mr. Daniel Ole Molo - *Secretary*

3. Mrs Jane Pere ~ *Vice Chairman*

4. Mrs Agnes Meshami - *Members*

5. Mr. Francis R. Molo - *Fundraiser*

6. Mr. Samuel Ole Ngoliaa – *facilitator*

WILD ANIMALS WITHIN MUSUL GROUP RANCH

1. Bolir baboons
2. Buffalo
3. Cheetah
4. Dikoik
5. Eland
6. Elephant
7. Reticulated giraffe
8. Leopards
9. Zebra
10. Grevy's Zebra
11. Water Buck
12. Create Kudu
13. Warthog
14. Grants Gazelle
15. Thomsons Gazelle
16. Impala
17. Klipspringer
18. Lion
19. Jackal
20. Hartbeast
21. Velvet Monkey
22. Grey rocks
23. Fargs
24. Oryx
25. Wild dogs
26. Bush buck
27. Mongoose
28. Rock Hyrax
29. Wild pig

BIRDS WITHIN MUSUL RANCH

FAMILY	NAMES
1. Numididae	- Helmeted Guinea jowl - Yellow Necked spur Jowl - Rulturine Guinea Jowl
2. Phasianidae	- Crested Francolin
3. Otidae	- Kori bustard - White Bellied bustard
4. Sagittariidae	- Secretary Bird
5. Struthionidae	- Ostrich
6. Accipitridae	- Aungur Buzzard - red tail usually feed on other birds - Black Kite - Eastern pale chanting -Goshawk - Egyptian Vulture
Birds of Prey	- Tawny Eagle - Verreaux's Eagle - White Headed Vulture - White Backed vulture
7. Dicruridae	- Common Drongo - Square - Tailed Oriole
8. Orioridae	- Black -headed Oriole
9. Corridae	- Pied Crow
10. Sturnidae	- Red Billed Oxpecker - Red-winged Starling - Superb starling
11. Ploceidae	- Black-caped social weaver - Ciny - capped social weaver - Red-headed weaver - Sepeke's weaver
12. Estrildidae	- Purple Grenadier -Pin-tiled Whydah
13. Columbidae	- Dusky Turtle dove - Ring - necked dove - Laughing dove
14. Charadriidae	- Crowned Plover
15. Musophagidae	- White bellied go away bird
16. Strigidae	- Spotted Eagle Owl - Verreaux's Eagle Owl

